  
 US Army Corps of Engineers  
 Jacksonville District  
**SAFETY ON THIS JOB DEPENDS ON YOU**

NO.	SYMBOL	ZONE

Checked by: GRL
Designed by: VRM
DRAWN BY: VRM
FILE NO.: WIP1225-00-000-000-000
Date: MAR 2022

```

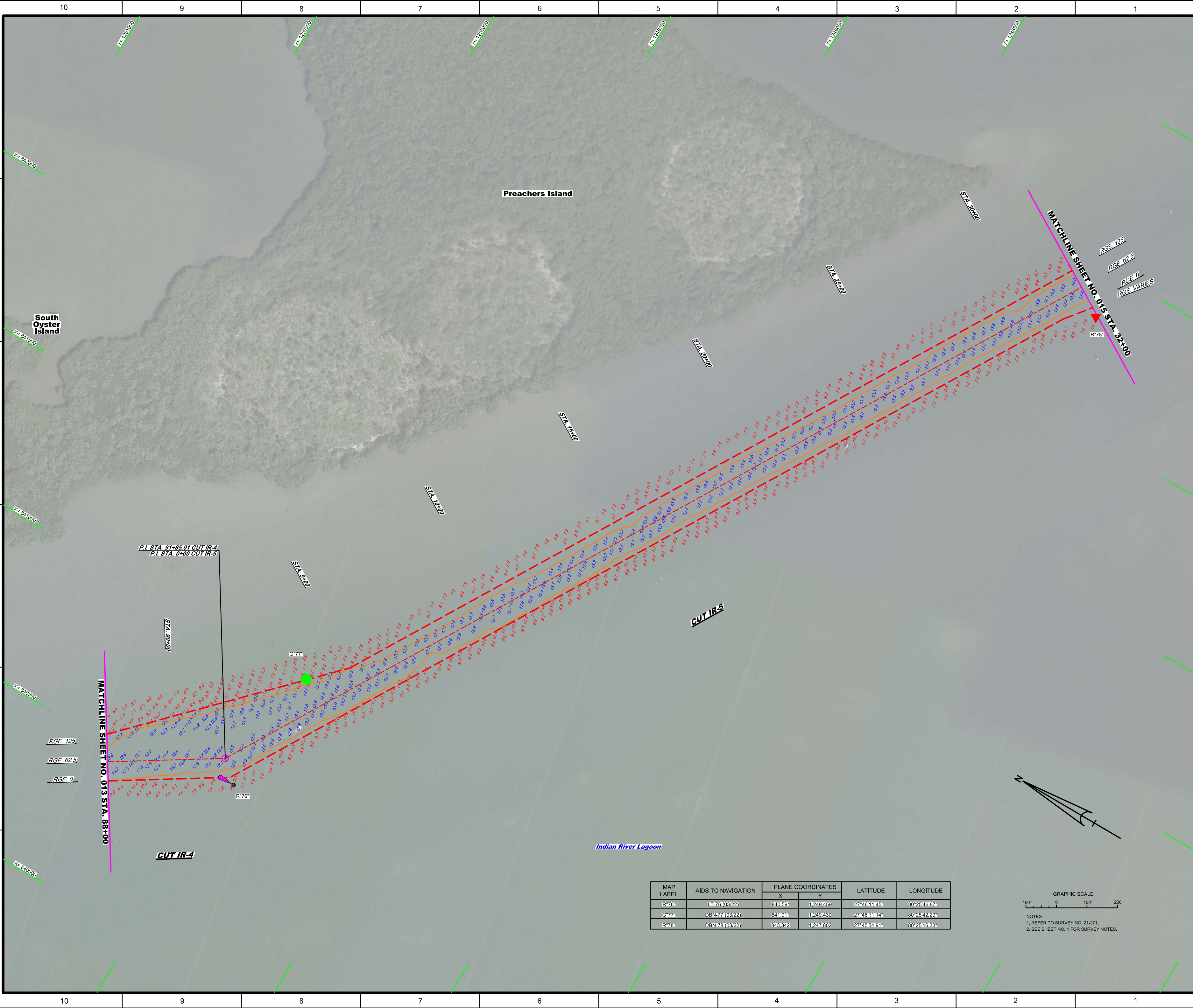
XXXXXXXXXXXXXXXXXXXX.DGN
XXXXXXXXXXXXXXXXXXXX.DGN
XXXXXXXXXXXXXXXXXXXX.DGN
21-27-AACON12.DGN
21-27-AHAW.DGN
WYAC-SANACE.DGN
21-27-GS-SRIRALDGN
Reference files
21-27-TM-HR12_I.DGN
  
```

**INTRACOASTAL WATERWAY**  
**JACKSONVILLE TO MIAMI, FLORIDA**  
**INDIAN RIVER COUNTY**  
**12-FOOT PROJECT**  
 STA. 22+00 CUT THRU STA. 55+00 CUT IR-4  
**PLAN**

MAP LABEL	AIDS TO NAVIGATION	PLANE COORDINATES		LATITUDE	LONGITUDE
		X	Y		
G-73*	DBN-73 (03/22)	837,240	1265,113	27°47'07.58"	80°26'23.89"

GRAPHIC SCALE  
 100' 0 100' 200'  
 NOTES:  
 1. REFER TO SURVEY NO. 21-271.  
 2. SEE SHEET NO. 1 FOR SURVEY NOTES.



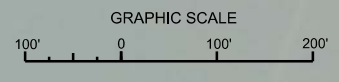



DEPARTMENT OF THE ARMY  
JACKSONVILLE DISTRICT, CORPS OF ENGINEERS  
JACKSONVILLE, FLORIDA

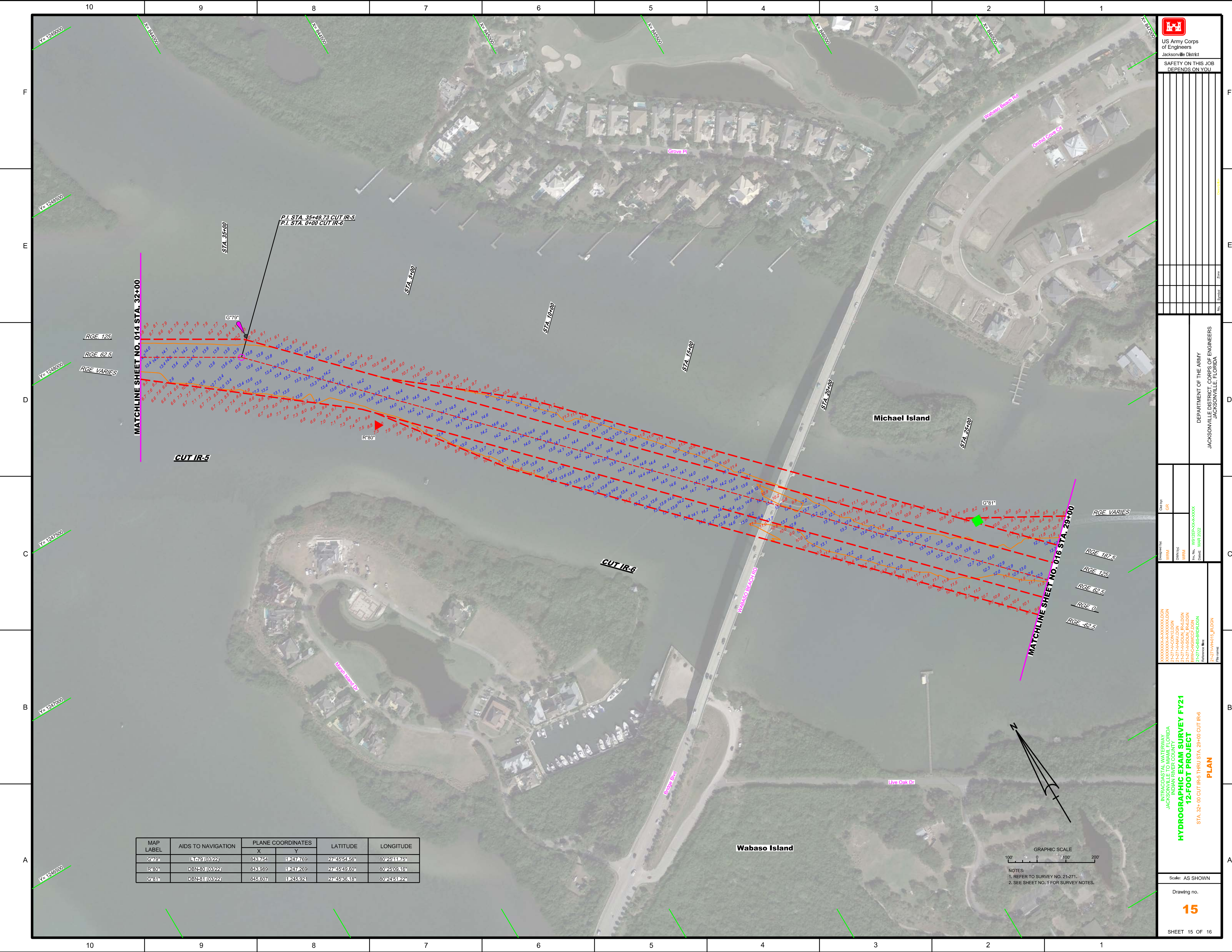
Checked by: GRL  
Designed by: WRM  
Drawn by: WRM  
File No.: M02256-00-00-00-00-00  
Date: MAR 2022


INTRACOASTAL WATERWAY  
JACKSONVILLE TO MIAMI, FLORIDA  
INDIAN RIVER COUNTY  
**HYDROGRAPHIC EXAM SURVEY FY21  
12-FOOT PROJECT**  
STA. 88+00 CUT IR-4 THRU STA. 32+00 CUT IR-5  
**PLAN**

MAP LABEL	AIDS TO NAVIGATION	PLANE COORDINATES		LATITUDE	LONGITUDE
		X	Y		
R76*	L76 (03/22)	840.591	1,249.459	27°46'11.45"	80°25'46.87"
G77*	DBN77 (03/22)	841.011	1,249.480	27°46'11.52"	80°25'42.20"
R78*	DBN78 (03/22)	843.342	1,247.802	27°45'54.91"	80°25'16.33"



NOTES:  
1. REFER TO SURVEY NO. 21-271.  
2. SEE SHEET NO. 1 FOR SURVEY NOTES.




 US Army Corps of Engineers  
 Jacksonville District  
 SAFETY ON THIS JOB  
 DEPENDS ON YOU

DEPARTMENT OF THE ARMY  
 JACKSONVILLE DISTRICT, CORPS OF ENGINEERS  
 JACKSONVILLE, FLORIDA

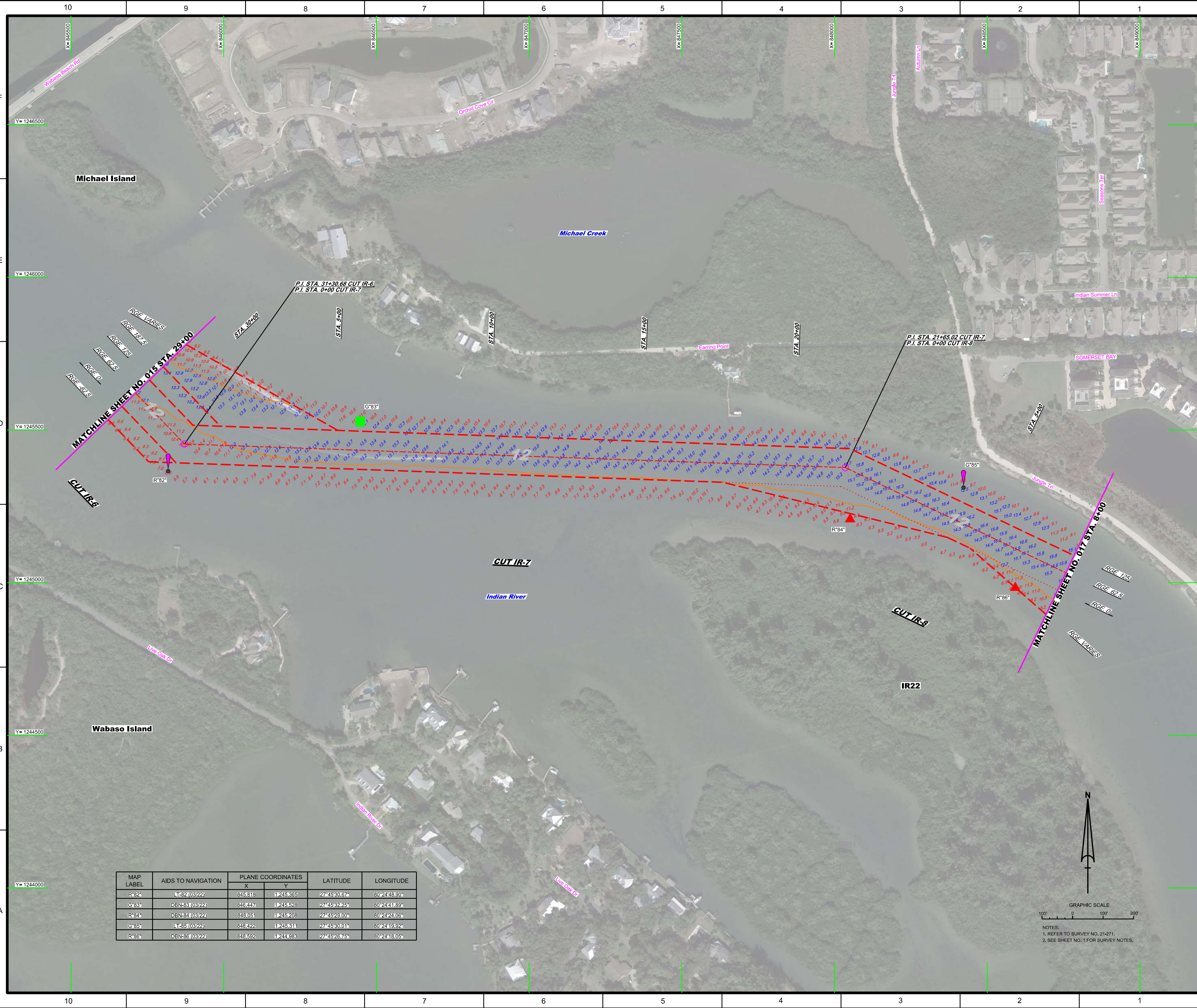
Designed by: GRL  
 Drawn by: WRM  
 Checked by: WRM  
 Date: MAR 2022

**INTRACOASTAL WATERWAY**  
**JACKSONVILLE TO MIAMI, FLORIDA**  
**INDIAN RIVER COUNTY**  
**12-FOOT PROJECT**  
 STA. 32+00 CUT IR-5 THRU STA. 29+00 CUT IR-6  
**PLAN**

Scale: AS SHOWN  
 Drawing no.  
**15**  
 SHEET 15 OF 16

MAP LABEL	AIDS TO NAVIGATION	PLANE COORDINATES		LATITUDE	LONGITUDE
		X	Y		
G79*	L79 (03/22)	843,754	11,247,769	27°45'54.56"	80°28'11.75"
R80*	DBN-80 (03/22)	843,989	11,247,269	27°45'49.60"	80°28'09.16"
G81*	DBN-81 (03/22)	845,607	11,245,924	27°45'38.18"	80°24'51.22"

GRAPHIC SCALE  
 100' 0 100' 200'  
 NOTES:  
 1. REFER TO SURVEY NO. 21-271.  
 2. SEE SHEET NO. 1 FOR SURVEY NOTES.



MAP LABEL	AIDS TO NAVIGATION	PLANE COORDINATES		LATITUDE	LONGITUDE
		X	Y		
R82	L82 (0322)	845.818	1245.385	27 45 30.67	80 24 48.90
G83	DBN-83 (0322)	846.247	1245.528	27 45 32.25	80 24 41.89
R84	DBN-84 (0322)	848.051	1245.208	27 45 23.00	80 24 24.06
G85	L85 (0322)	848.422	1245.311	27 45 30.01	80 24 19.92
R86	DBN-86 (0322)	848.592	1244.988	27 45 28.76	80 24 18.05

NOTES:  
 1. REFER TO SURVEY NO. 21-271.  
 2. SEE SHEET NO. 1 FOR SURVEY NOTES.









